

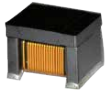


ACMA POT Series

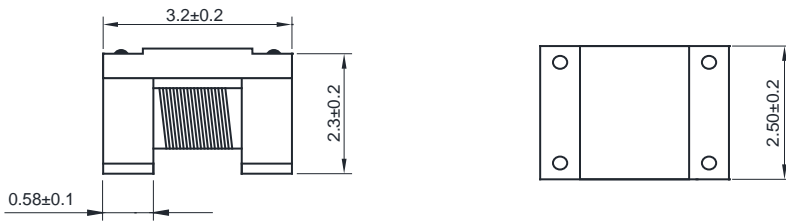
Winding Type Chip Inductor

Size 3225

FEATURKOHEicPerPropert PO:ie 32BT005s Aβ.0.7APPLI 0(C)T



°C

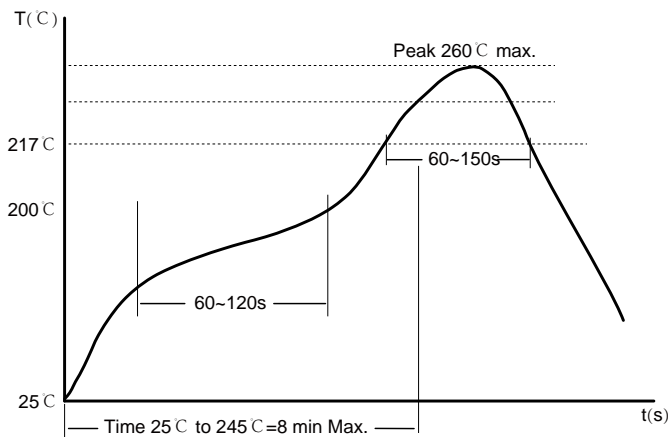


Part No	L @ 100KHz (μ H)	Tol.	R _{DC} Max. (Ω)	I _{SAT} typ. (mA)	I _R typ. (mA)

:



Soldering Reflow:



Preheat condition: 150 ~200 °C / 60~120 sec.

Allowed time above 217 °C : 60~150 sec.

Max temperature: 260 °C .

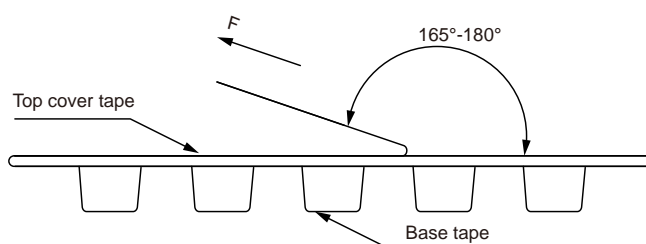
Allowed Reflow time: 3x max.

Packaging Information:

Tape Dimension :

Series	A0 (mm)	B0 (mm)	D (mm)	P0 (mm)	P1 (mm)	W (mm)	K0 (mm)	E (mm)	T (mm)
ACMA3225POT	2.70± 0.1	3.50± 0.1	1.5± 0.1	4.0± 0.1	4.0± 0.1	8.0± 0.3	2.75± 0.1	1.75± 0.1	0.30± 0.05

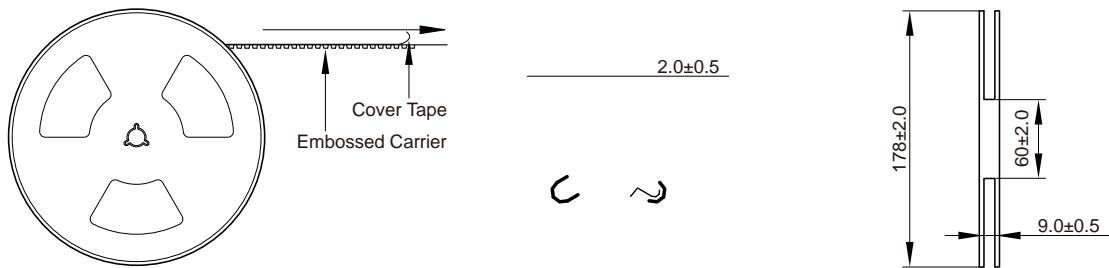
Peel force of top cover tape:



The peel force of top cover tape shall be between 0.14 to 0.78 N



Reel Dimension: [mm]



Cautions and Warnings:

Storage Conditions:

- The storage period is within 12 months after the completion of production. Be sure to follow the storage conditions (temperature: -5 to 35°C , humidity: 75% RH Max). If the storage period elapses, the soldering of the terminal electrodes may deteriorate. The warranty period is one year.
- Product should not be exposed to environment with high temperature, high humidity, dust, corrosive gas and etc.
- Products should be handled with care to avoid damage or contamination from perspiration and skin oils.
- Please always handle products carefully to prevent any damage caused by dropping down or inappropriate removing.

Operation Instructions:

- Self heating (temperature increase) occurs when the power is turned ON, so the tolerance should be sufficient for the set thermal design.
- Before soldering, be sure to preheat components. The preheating temperature should be set so that the temperature difference between the solder temperature and chip temperature does not exceed 150°C .
- Soldering corrections after mounting should be within the range of the conditions determined in the specifications. If overheated, a short circuit, performance deterioration, or lifespan shortening may occur.
- Generally, Koher might not be familiar with either customer's specific application or actual requests as customer does. As a result customer shall be responsible for checking and confirming whether Koher product with the performance described in the product specification is suitable for using in customer's particular application or not.